

Fig. 12



Fig. 13

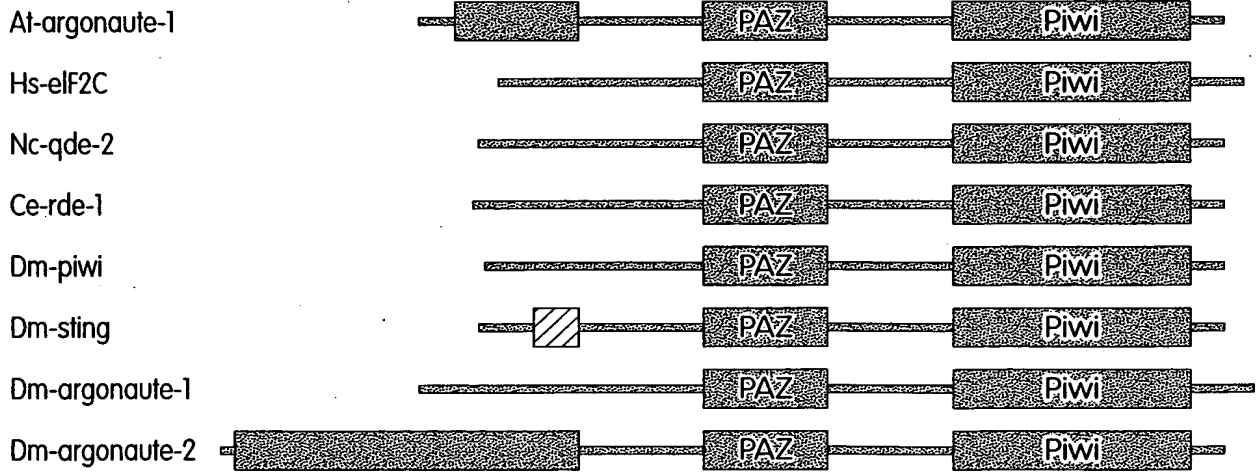


Fig. 14

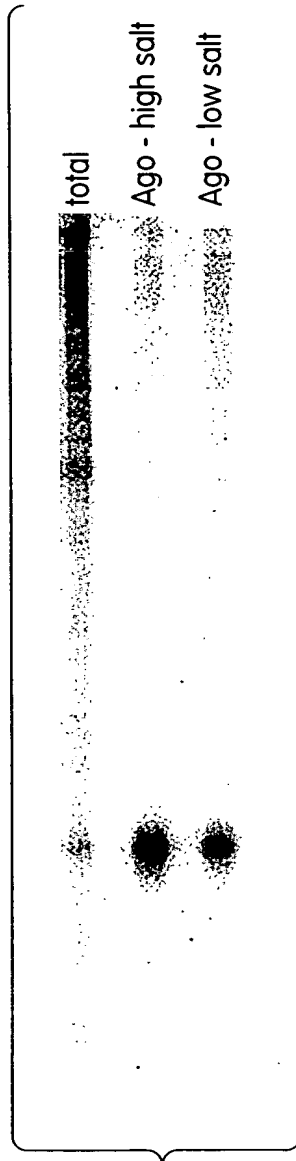


Fig. 15

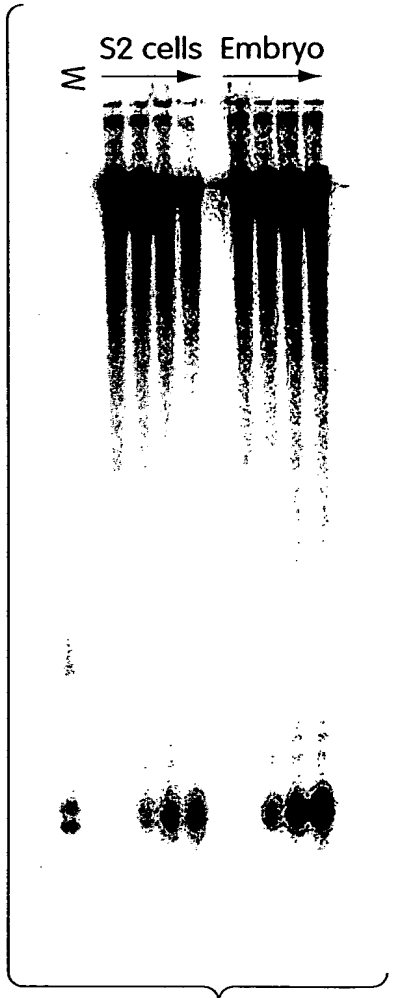


Fig. 16

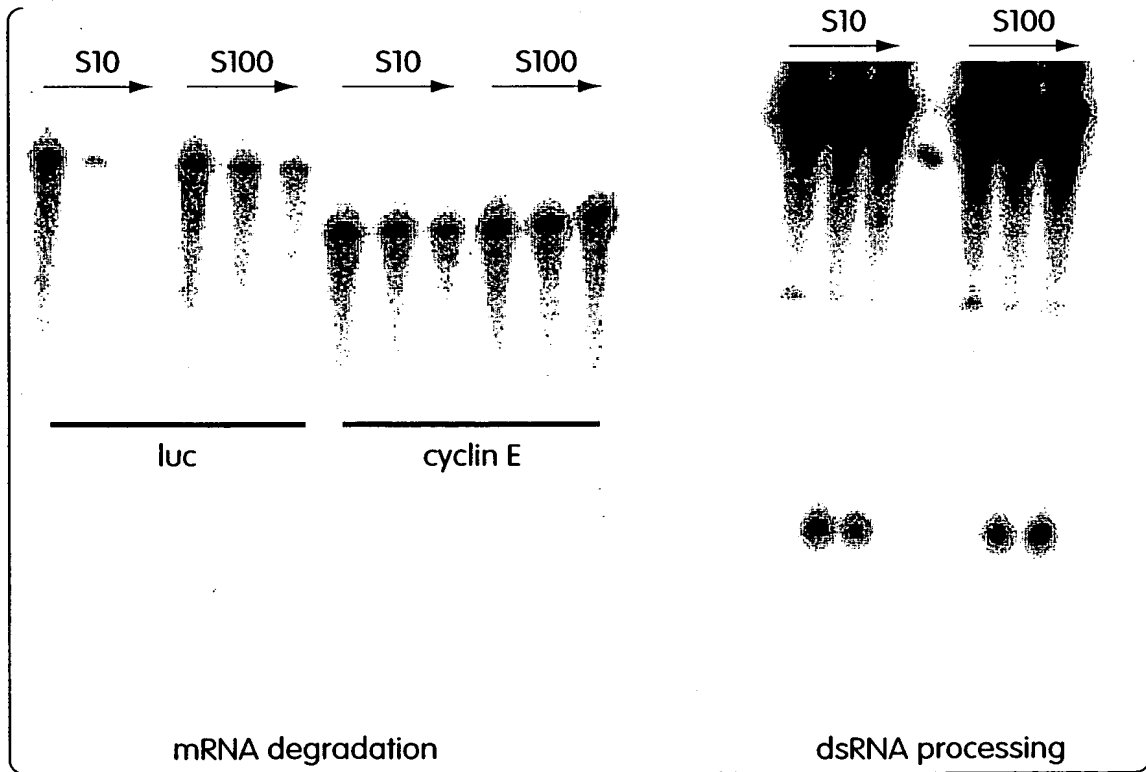


Fig. 17

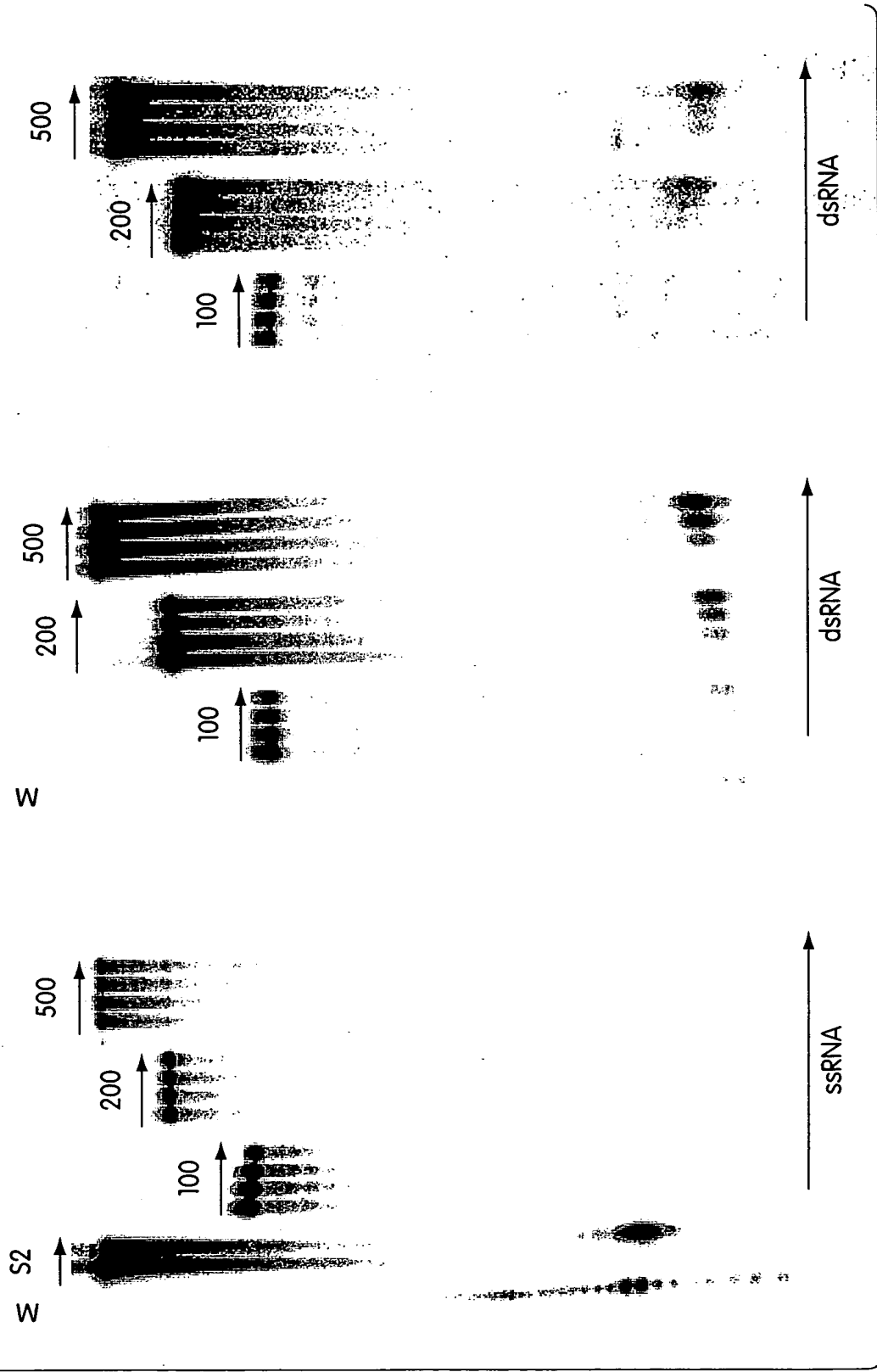


Fig. 18

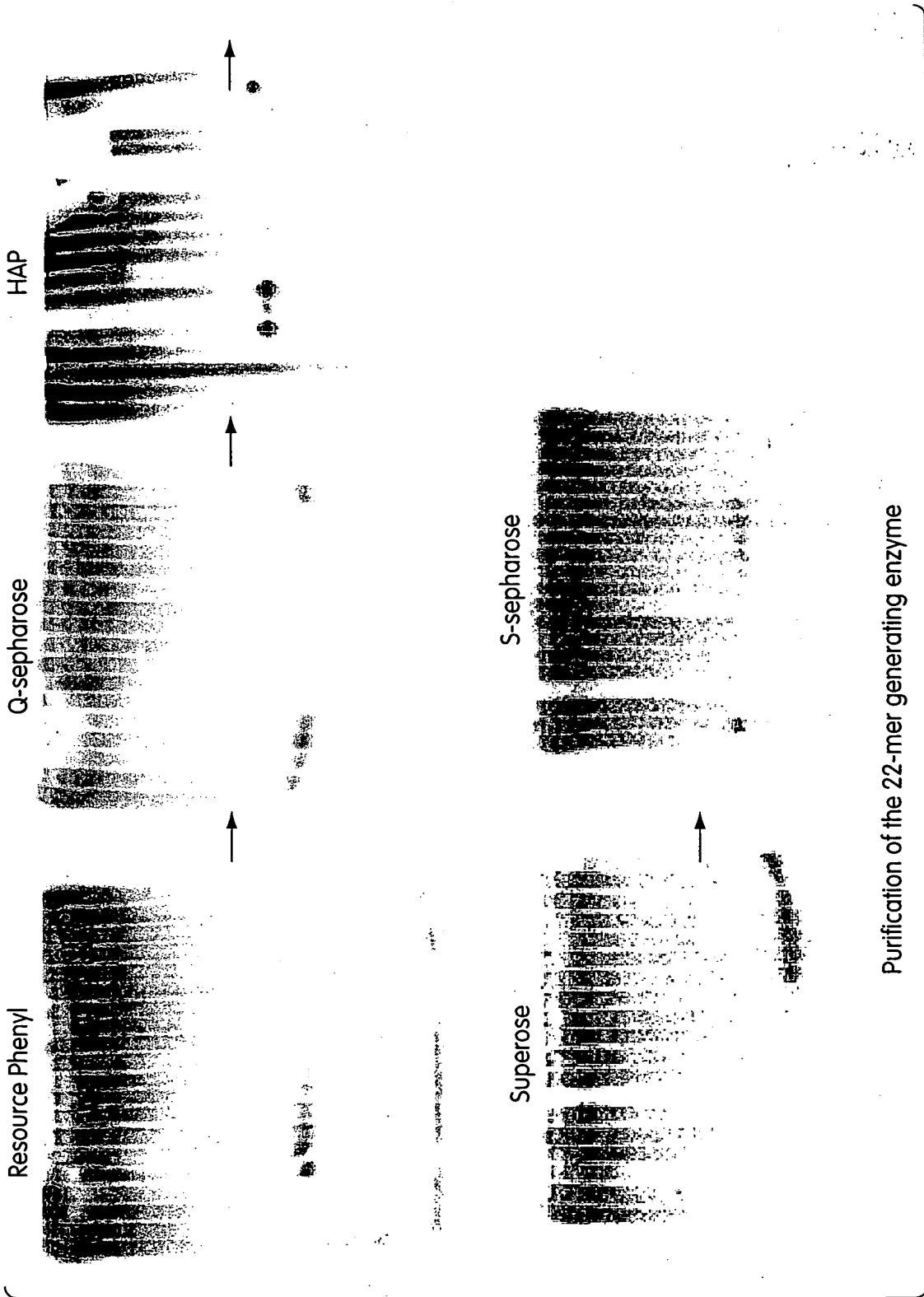


Fig. 19

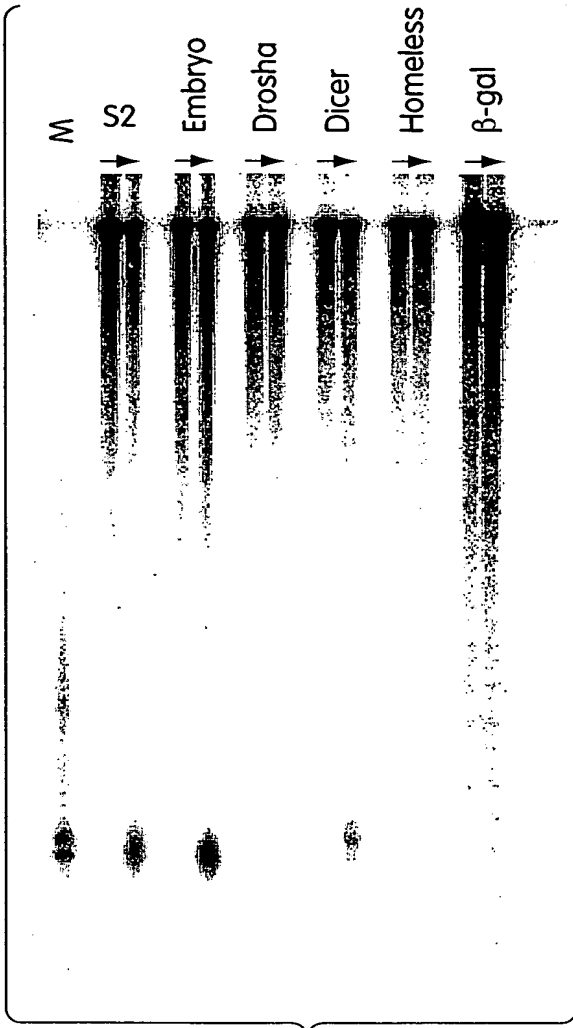


Fig. 20A

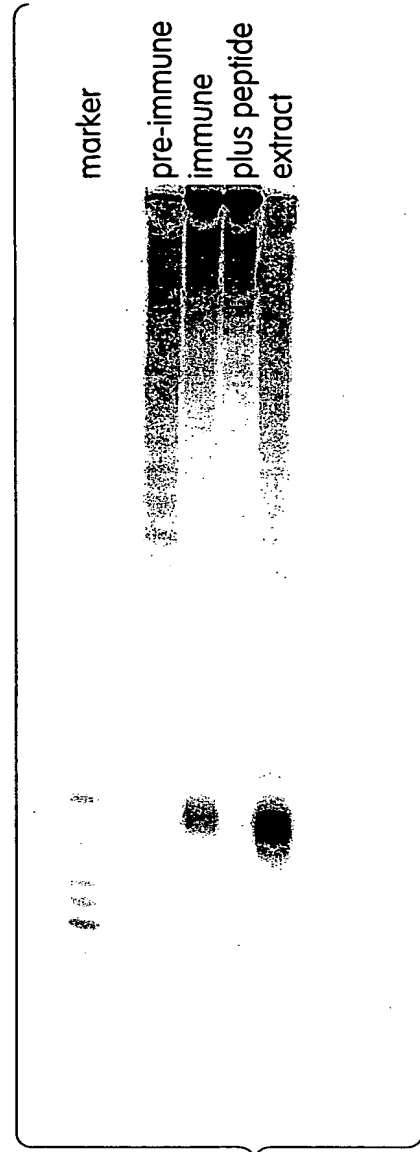


Fig. 20C

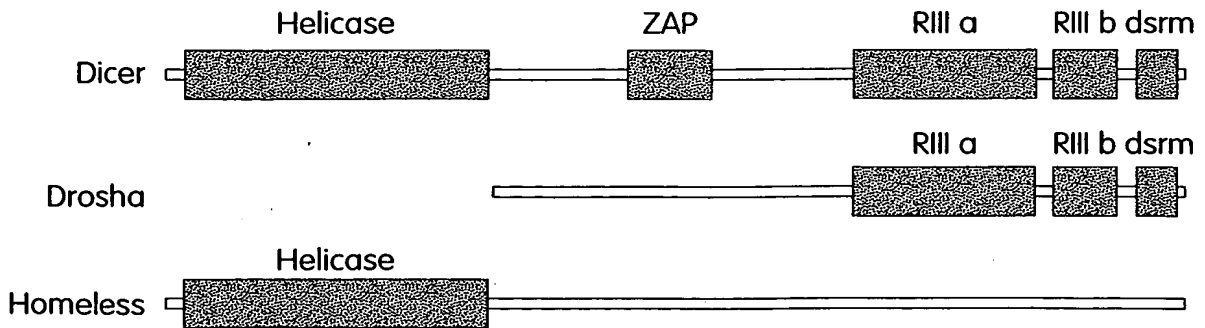


Fig. 20B

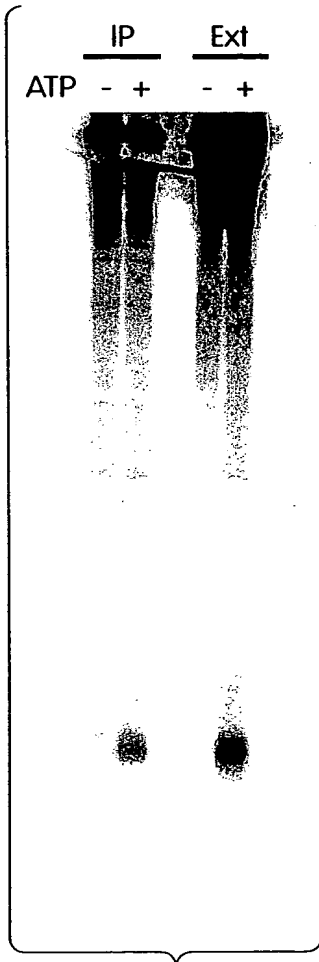


Fig. 21

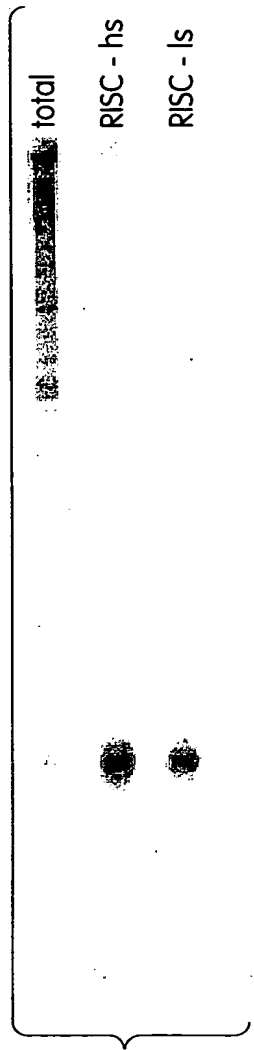


Fig. 22A

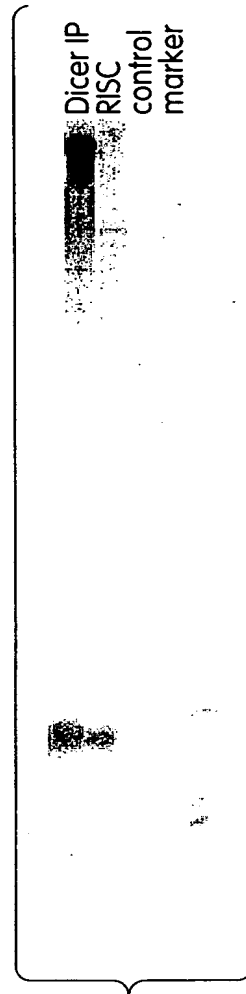


Fig. 22B



23/31

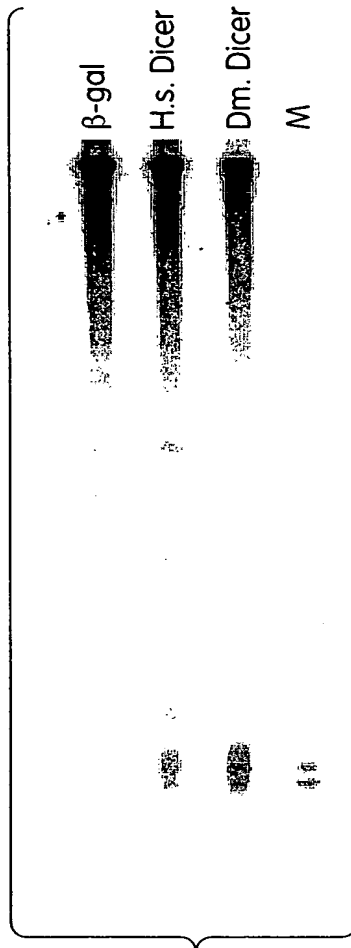


Fig. 23



24/31

MGKKDKNKKGGQDSAAAPQPQQQOKQQQORQQQPQQLQQPQQLOQPQQLOQPQQQQQQ
QPHQQQQOSSRQOPSTSSGGSRASGFQGGQQQKSQDAEGWTAQKKQKQOVQGWTKQ
GQQGGHQOGRQGDGGYQQRPPGQQGGHQOGRQOEGGYQQRPPGQQGGHQOGRQO
QEGGYQQRPSGQQGGHQOGRQOEGGYQQRPPGQQGGHQOGRQOEGGYQQRPSGQ
QQGGHQOGRQOEGGYQQRPSGQQGGHQOGRQOEGGYQQRPSGQQGGHQOGRQO
EGGYQQRPPGQQPNQTSOGQYQSRGPPQQQAAPLPLPPQAGSIKRGTIGKPGQVG
INYLDLDSLKMPSVAYHYDVKIMPERPKKFYRQAFEQFRVDQLGGAVLAYDGKASCYS
VDKLPLNSQNPEVTVTDRNGRTLRYTIEIKETGDS**TIDLKSL**TTYMNDRI**FDKPMRAM**
QCVEVVLASPCHNKAIRVGR**SFFKMSDPNNRHELDDGYEALVGLYQAFMLGDRPFLNV**
DISHKSFPI SMPMIEYLERFSLKAK**INNTTNLDYSRR**FLEPFLRGINVVYTPPQSFQ
APRVYRVNGLSR**APASSETFEHDGKKVT**IASYFHSRNYPLKFPQLHCLNVGSSIKSIL
LPIELCSIEEGQALNRKDGATQVANMIKYAATSTNVRKRKIMNLLQYFQHNLDPTISR
FGIRIANDFIVVSTRVLSPPQVEYHSKRFTMVKNGSWRMDGM**FLEPKPKAHKCAVLY**
CDPRSGRKMNYTQLNDFGNLIISQKAVNISLSDSVTYRPFDDERSLDTIFADLKRS
QHDLAIVIIPQFRISYDTIKQKAELOHGILTQCIKQFTVERKCNNQTIIGNILLKINSK
LNGINHKIKDDPRLPMMKNTMYIGADVTHPSPDQREIPSVVGVAASHDPYGASYNMQY
RLQGALEEIEDMFSITLHLRVYKEYRNAYPDHIYYRDGVSDGQFPKIKNEELRCI
KQACDKVGCKPKICCVIVVKRHHTRFFPSGDVTTSNKFNNVDPGTVVDRITIVHPNEMQ
FFMVSHQAIQGTAKPTRYNVIENTGNLDIDLLQQLTYNLCHMFPRCNRSVSYAPAPAYL
AHLVAARGR**VYLTGTNR**FLDLKKEYAKRTIVPEFMKKNPMYFV

Fig. 24



25/31

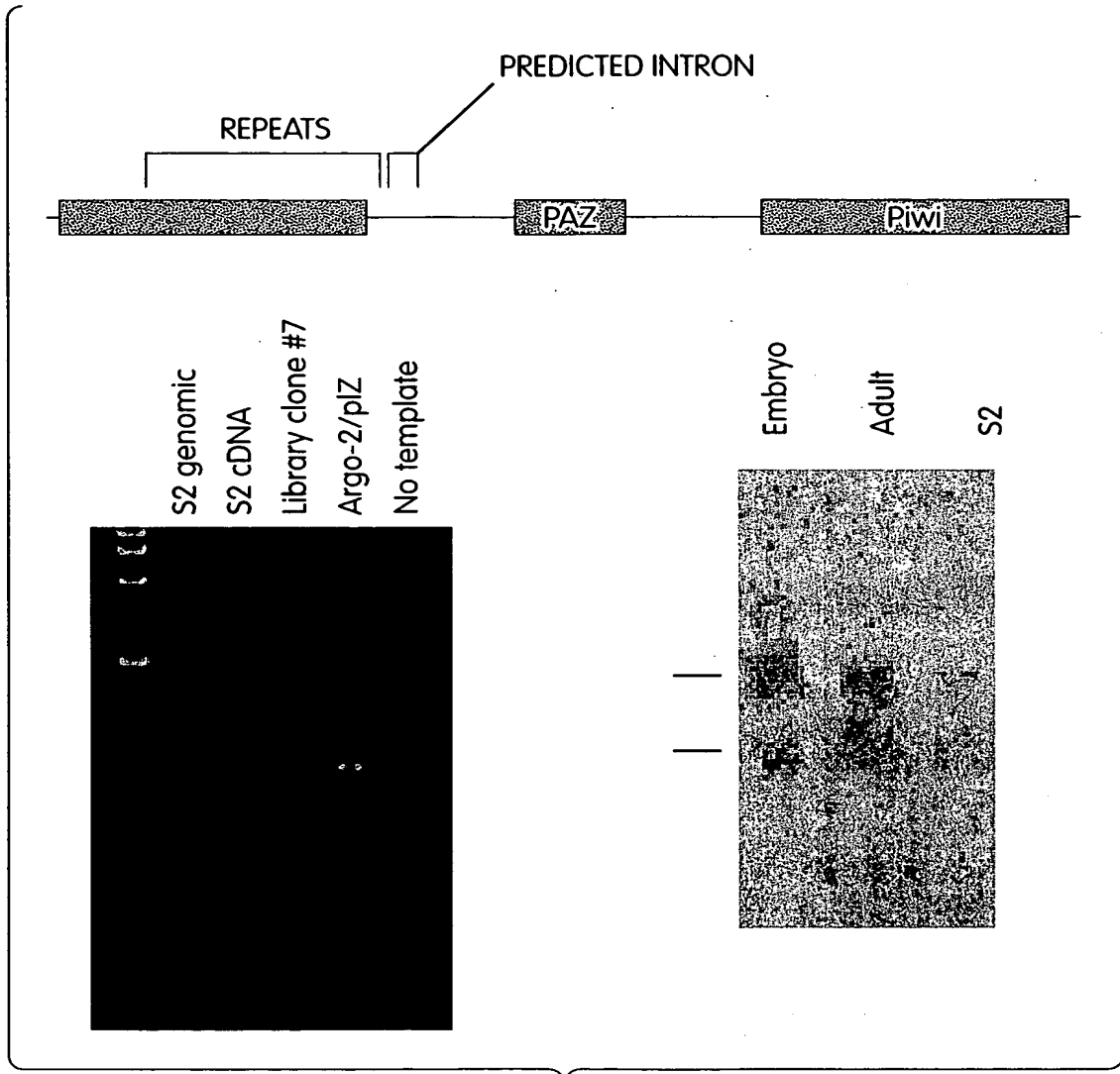


Fig. 25



26/31

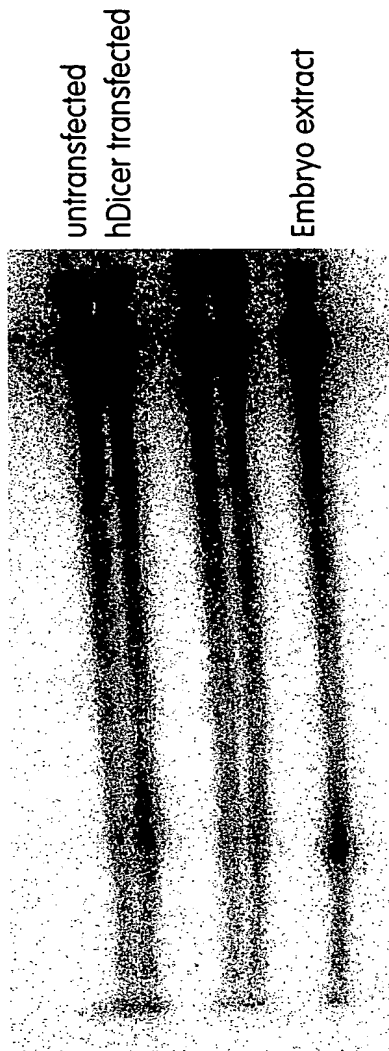


Fig. 26



27/31

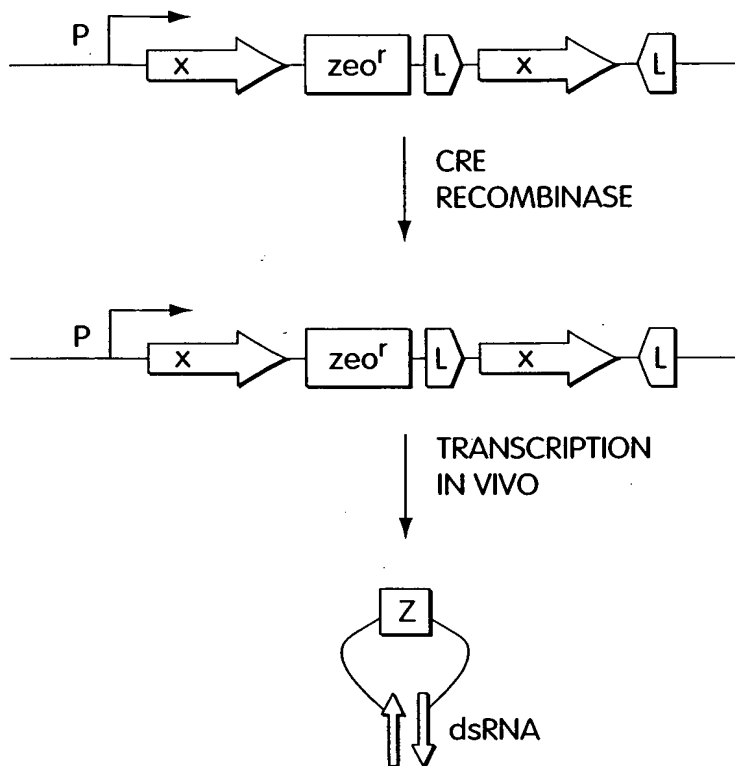


Fig. 27



28/31

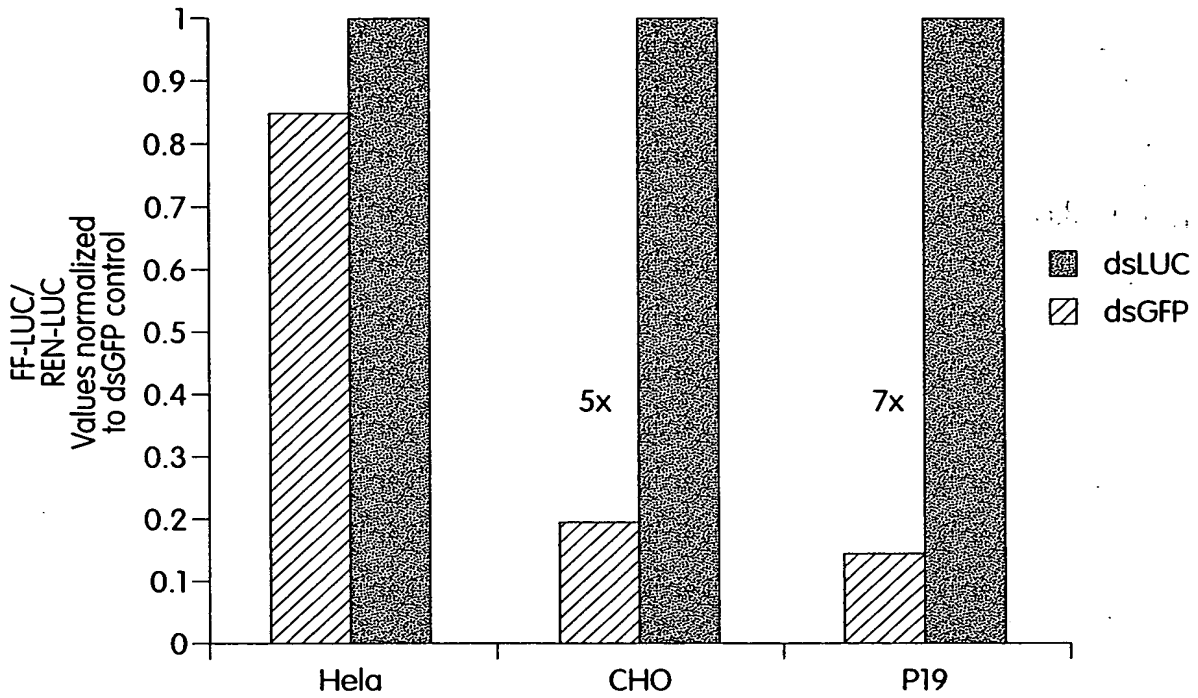


Fig. 28

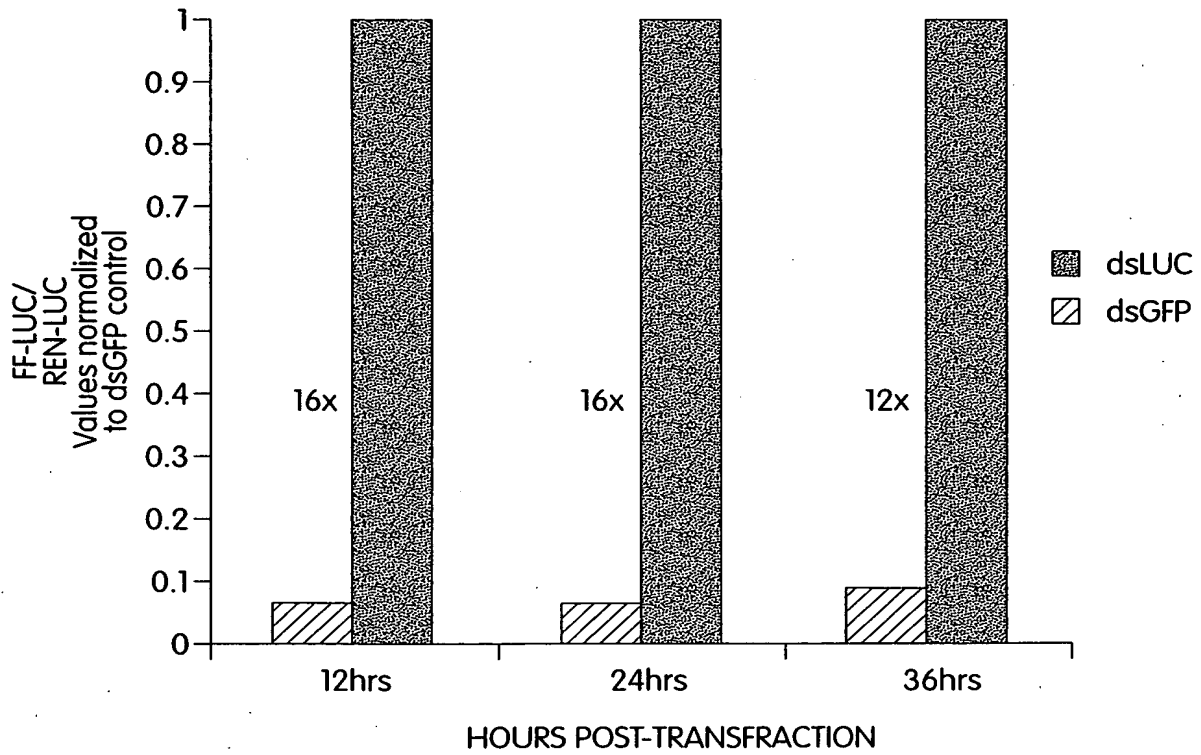


Fig. 29



29/31

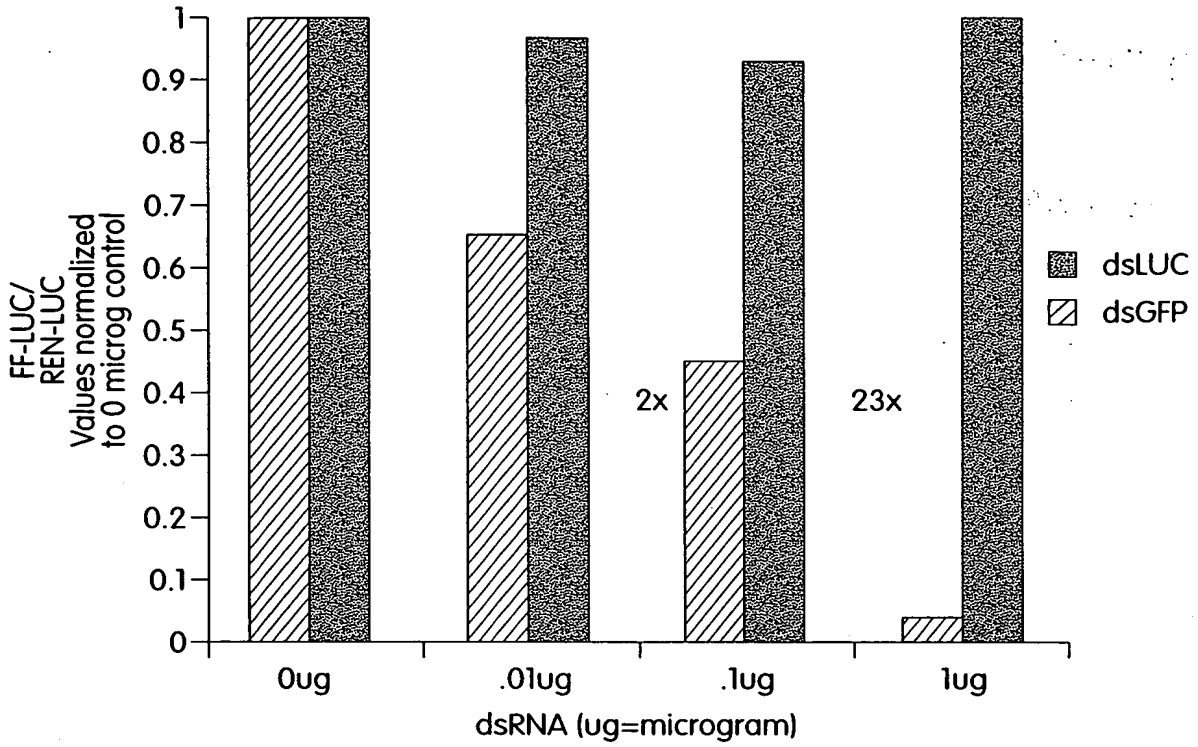


Fig. 30

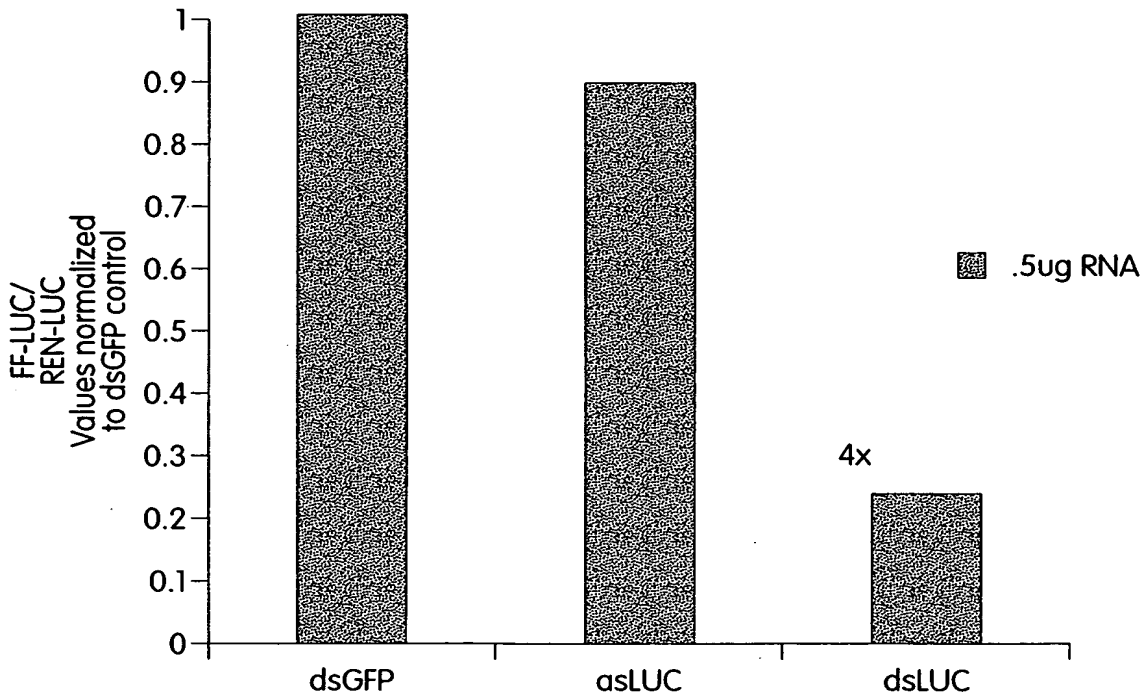


Fig. 31

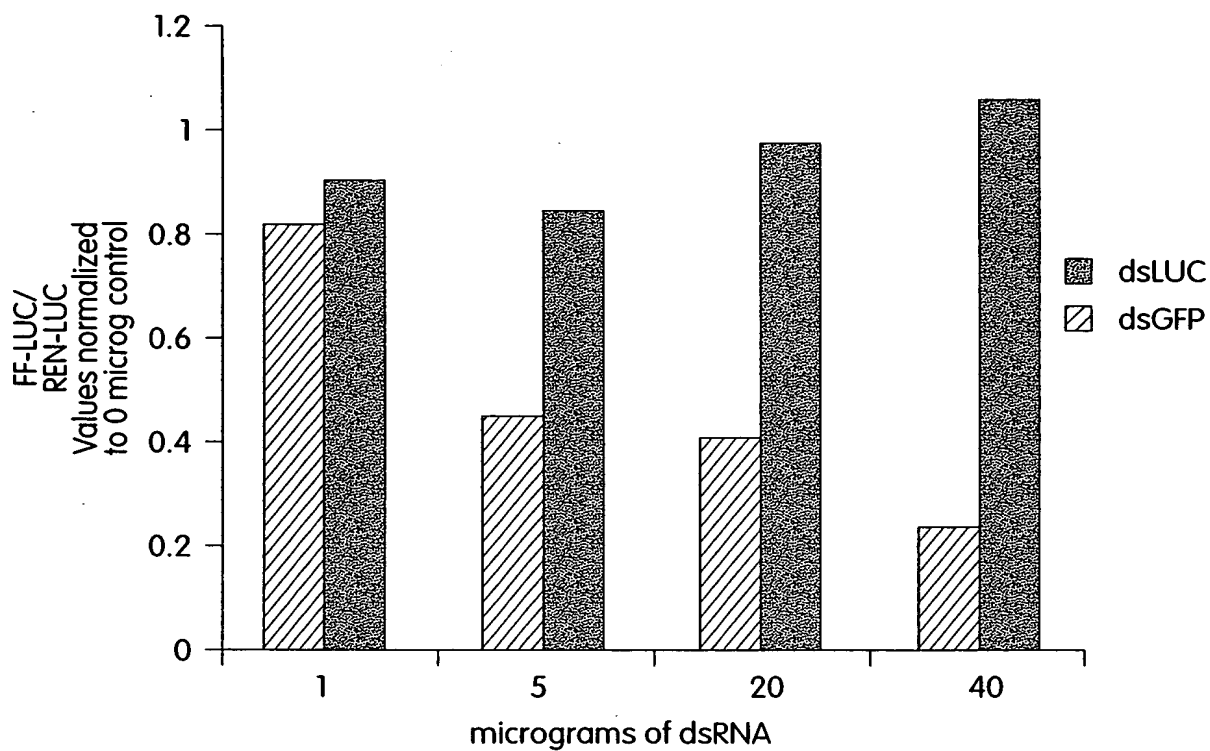


Fig. 32

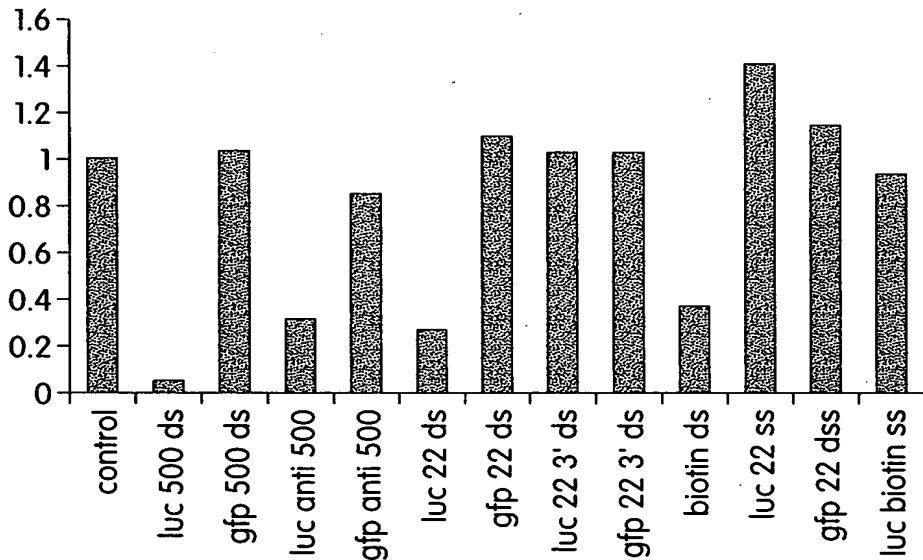


Fig. 33



1/31

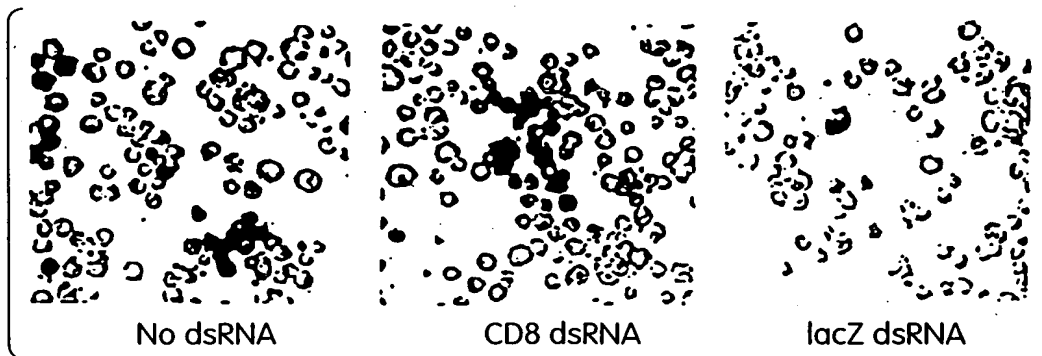


Fig. 1A

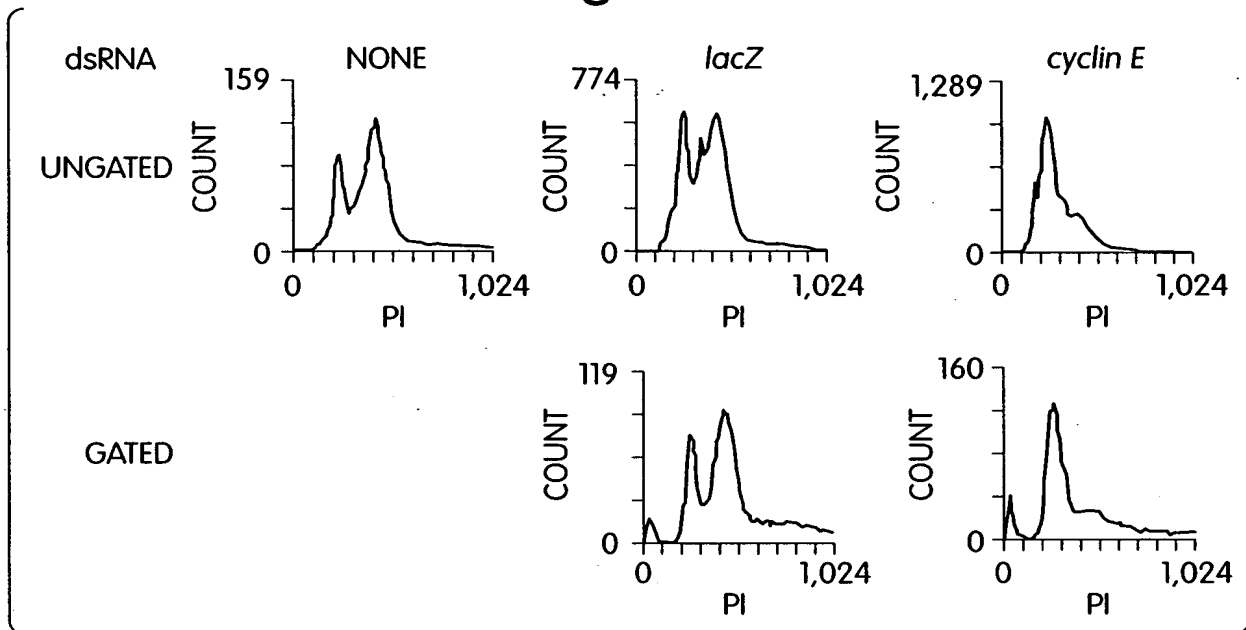


Fig. 1B

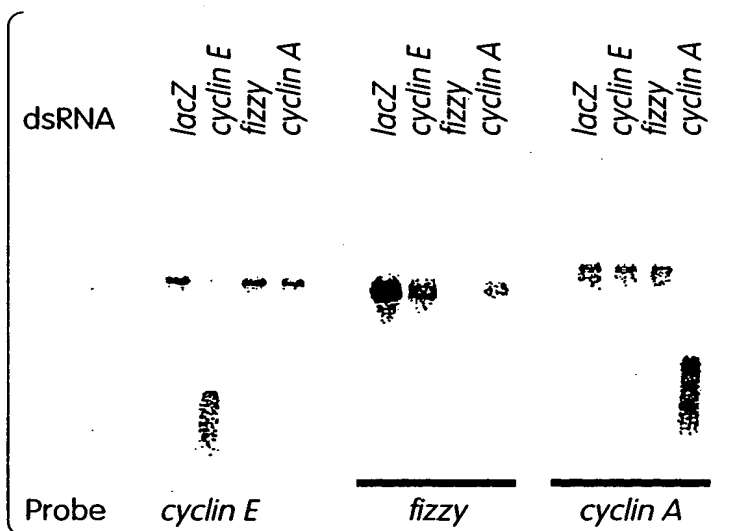


Fig. 1C

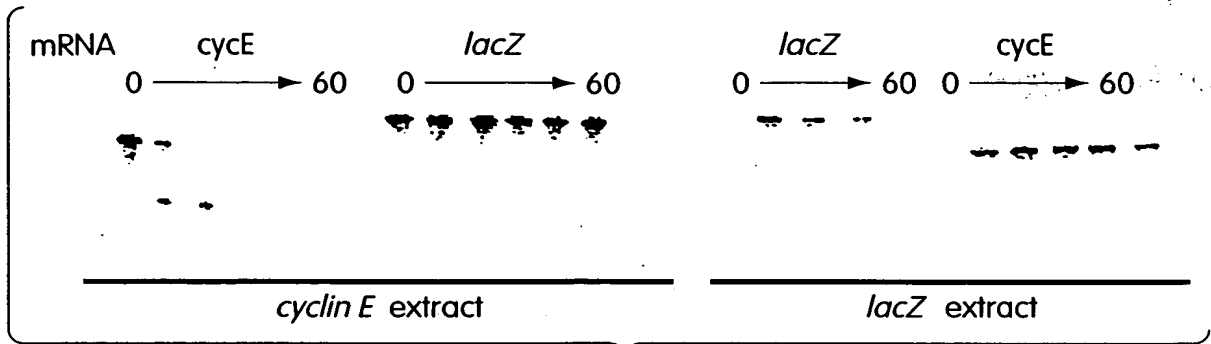


Fig. 2A

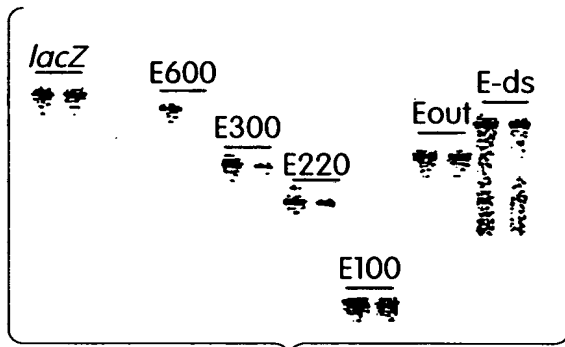


Fig. 2B

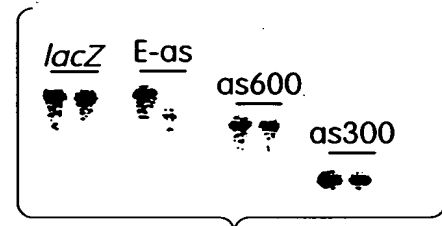


Fig. 2C

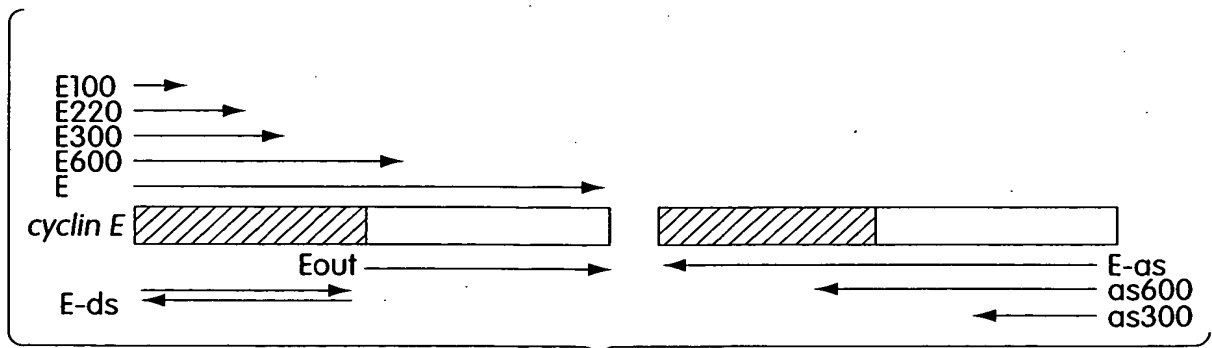


Fig. 2D



3/31

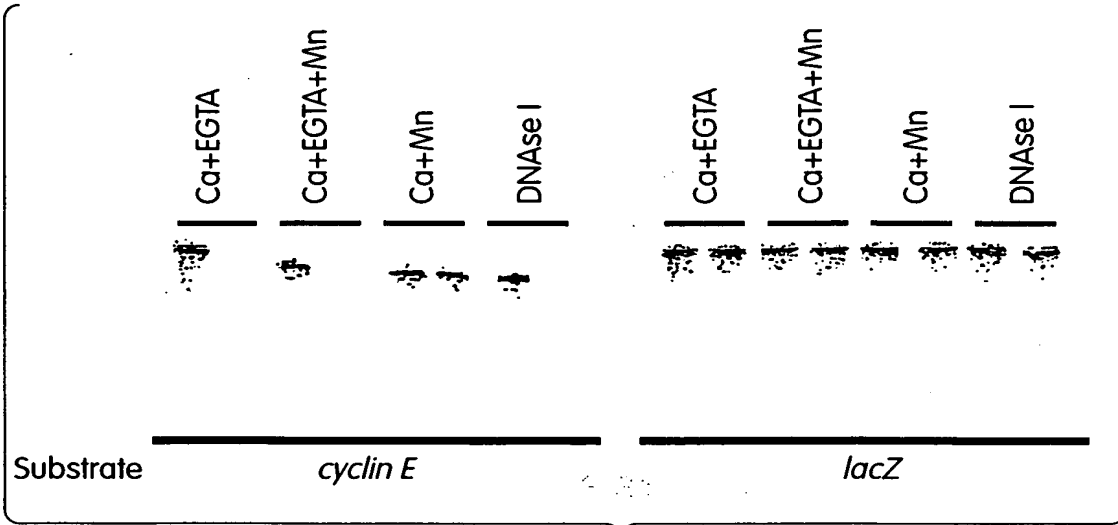


Fig. 3

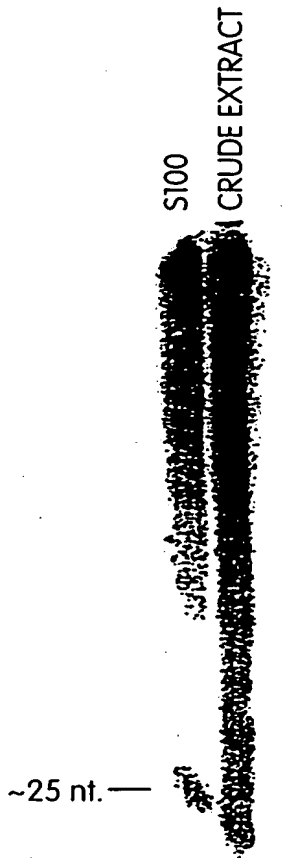


Fig. 4A

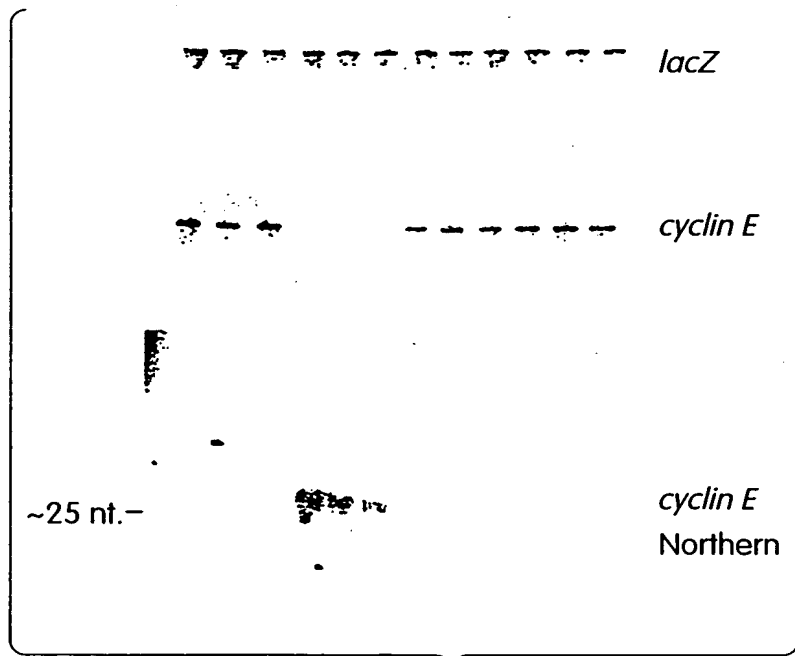


Fig. 4B



4/31

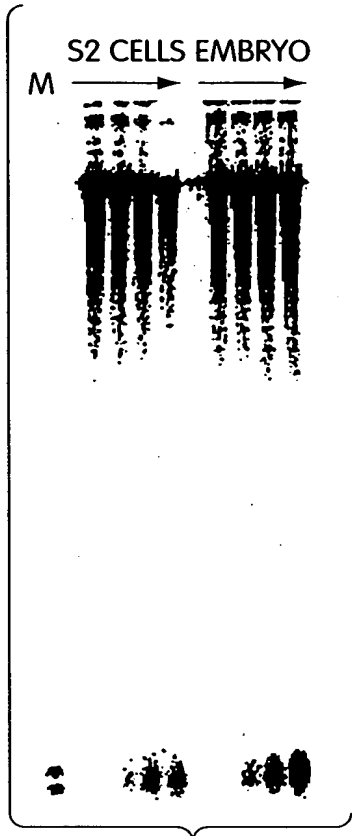


Fig. 5A

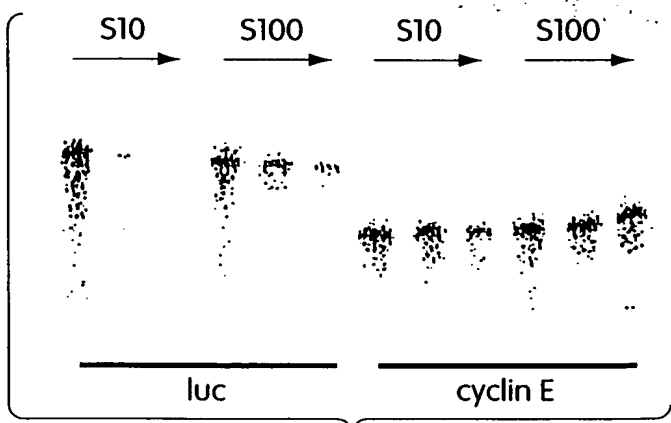


Fig. 5B

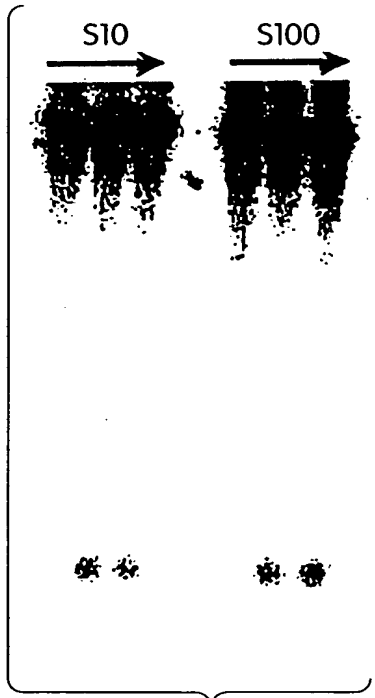


Fig. 5C

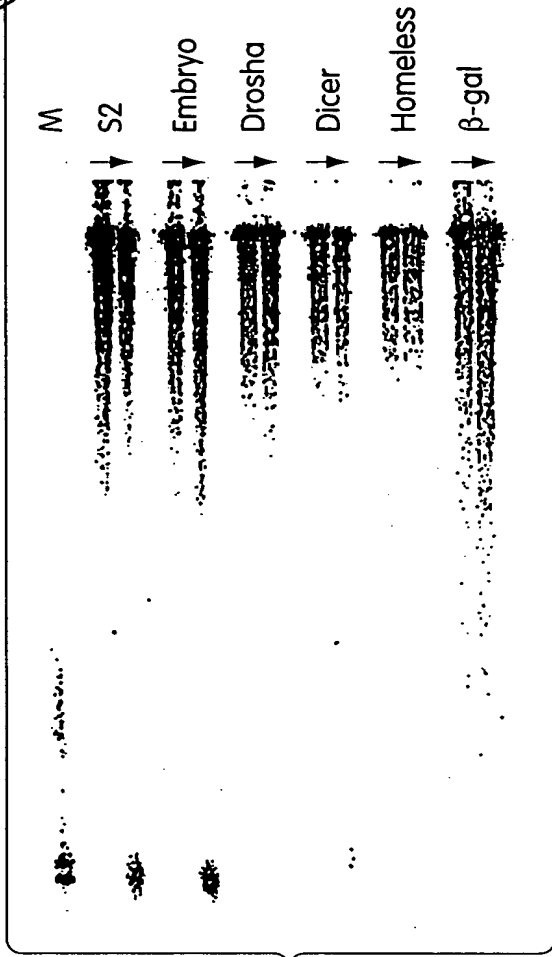


Fig. 6A

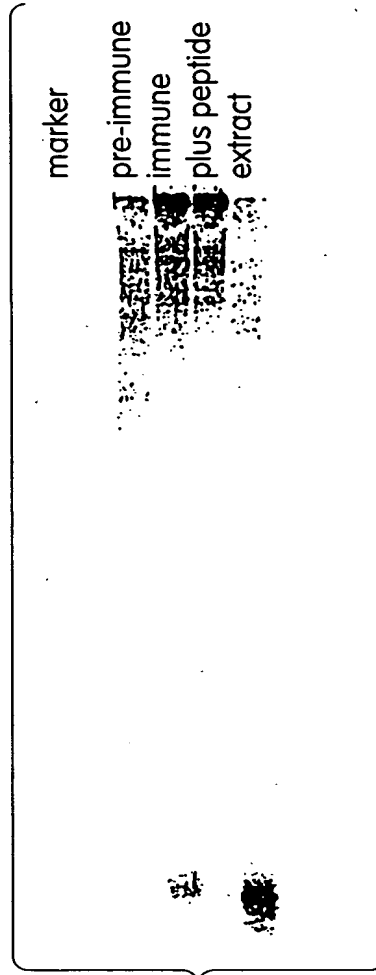


Fig. 6C

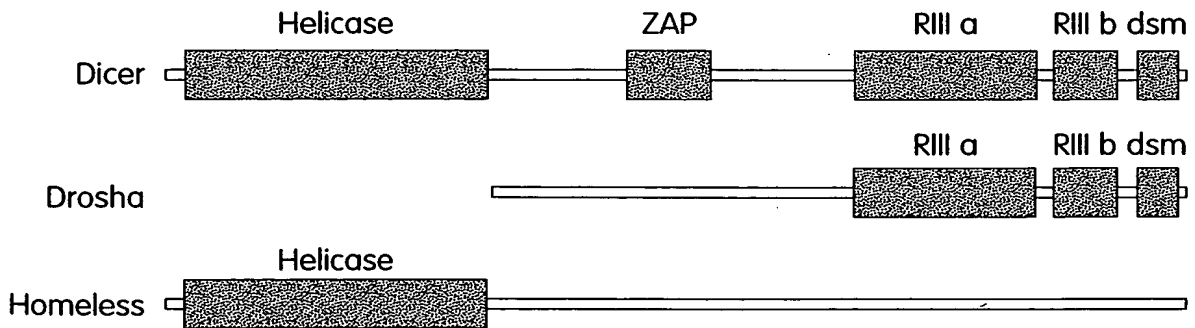


Fig. 6B

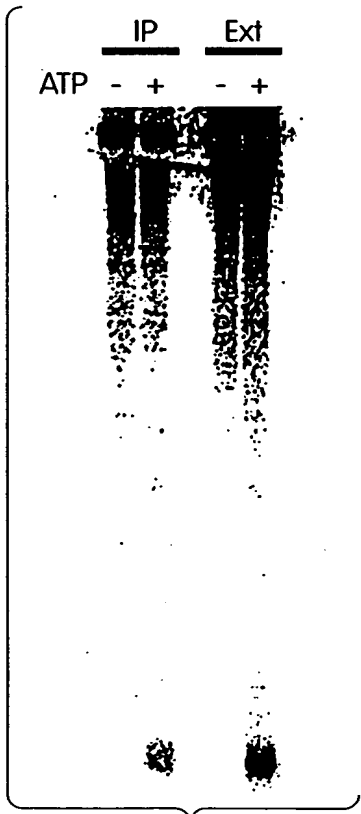


Fig. 6D

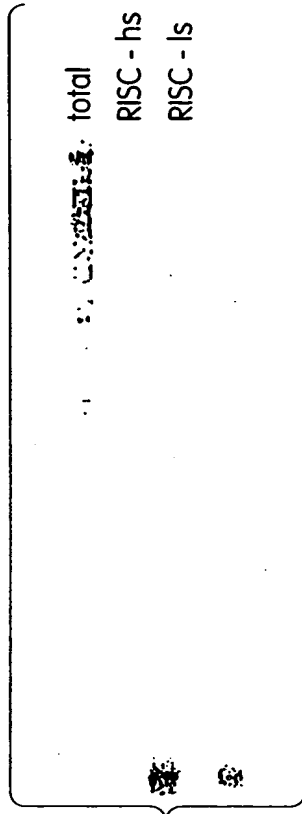


Fig. 6E

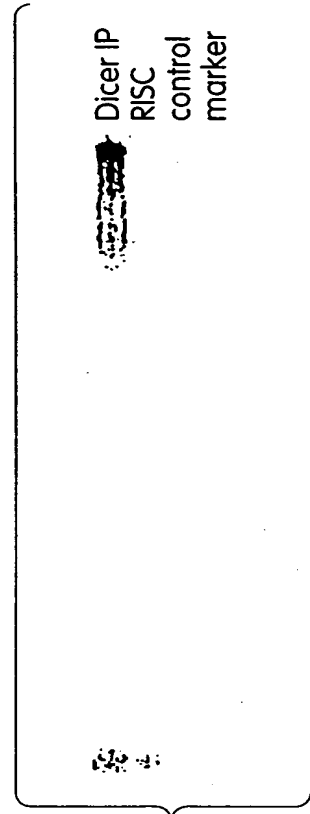


Fig. 6F



7/31

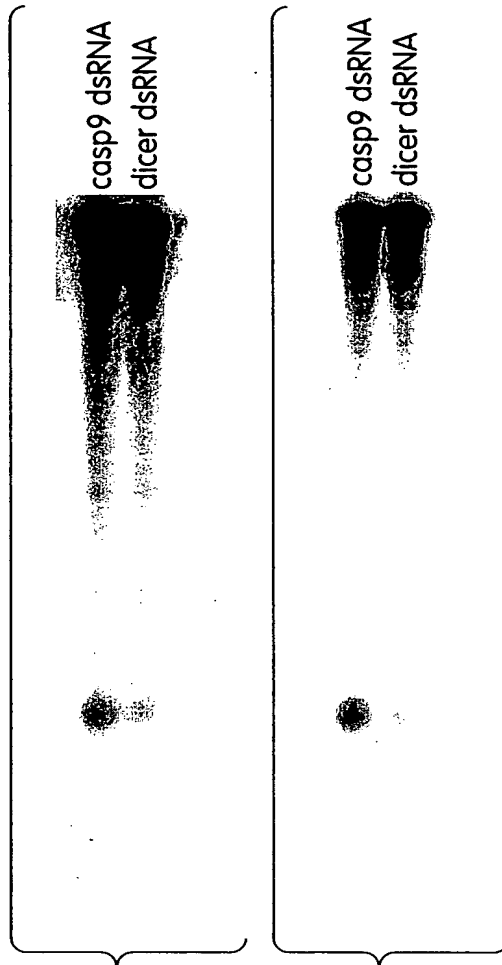


Fig. 7A

Fig. 7B

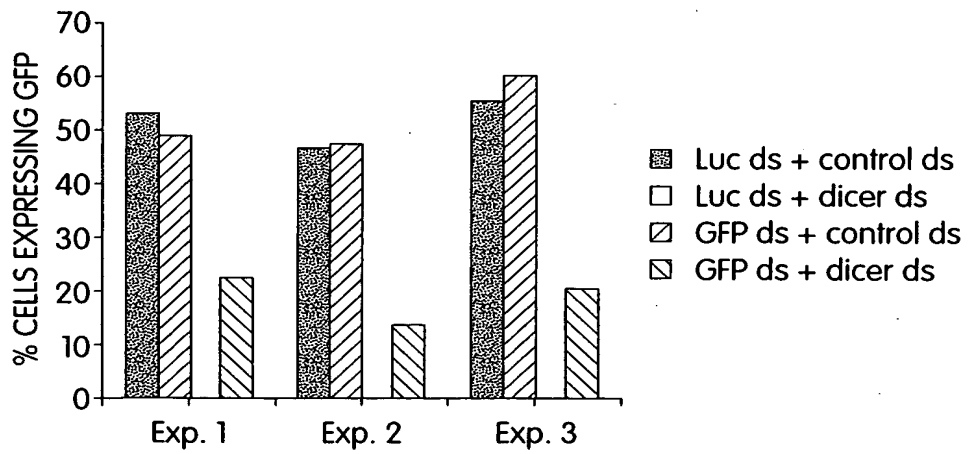


Fig. 7C

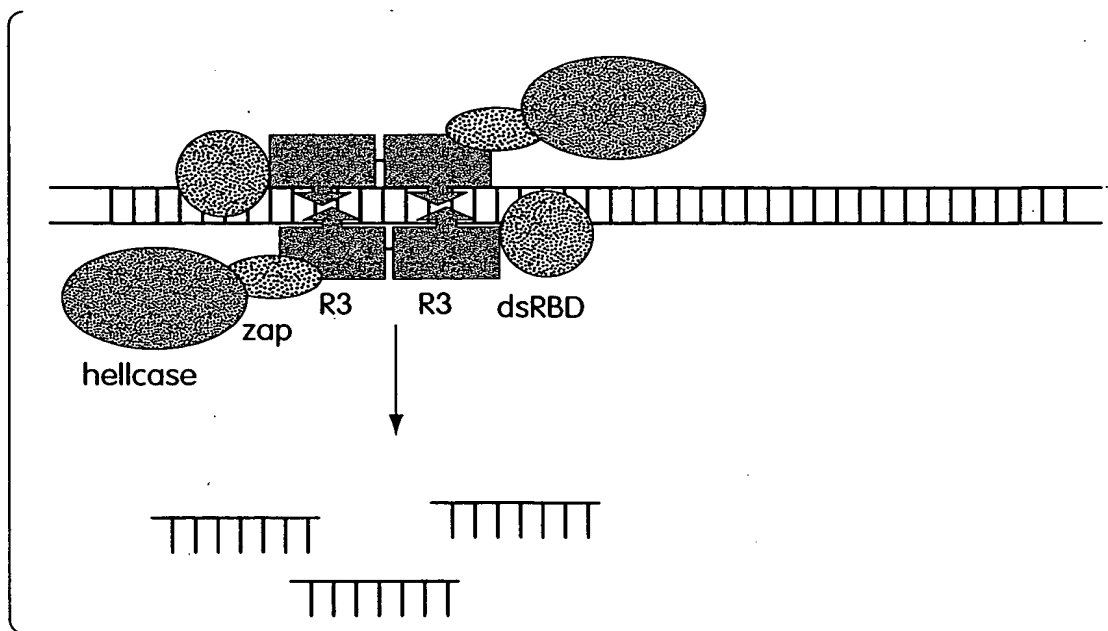


Fig. 8A

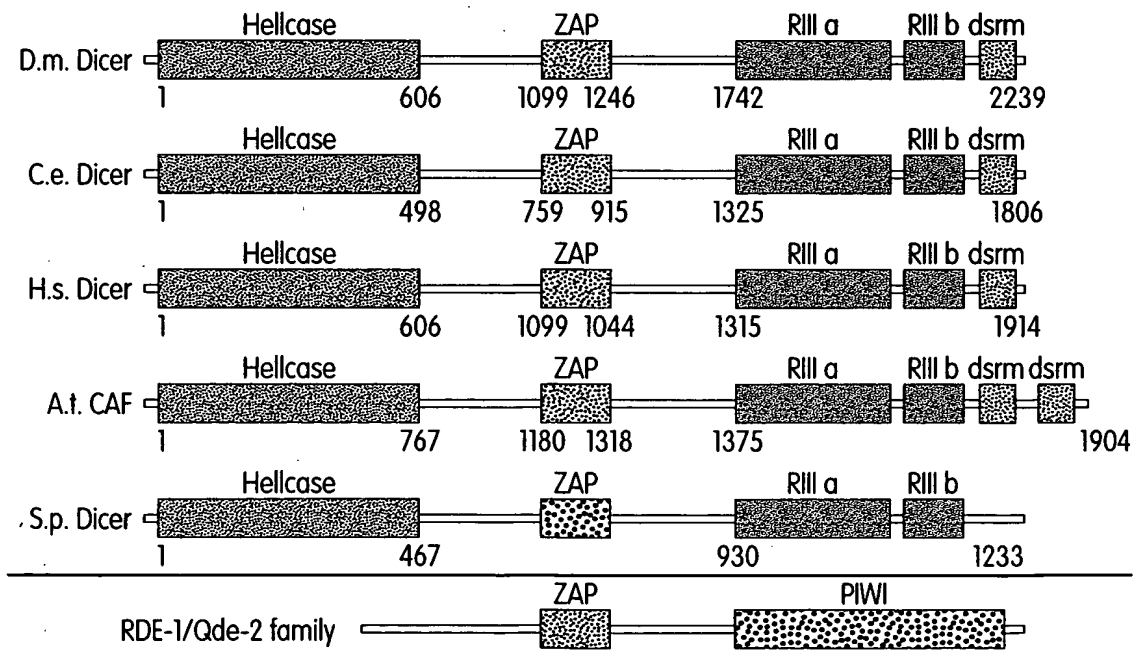


Fig. 8B



9/31

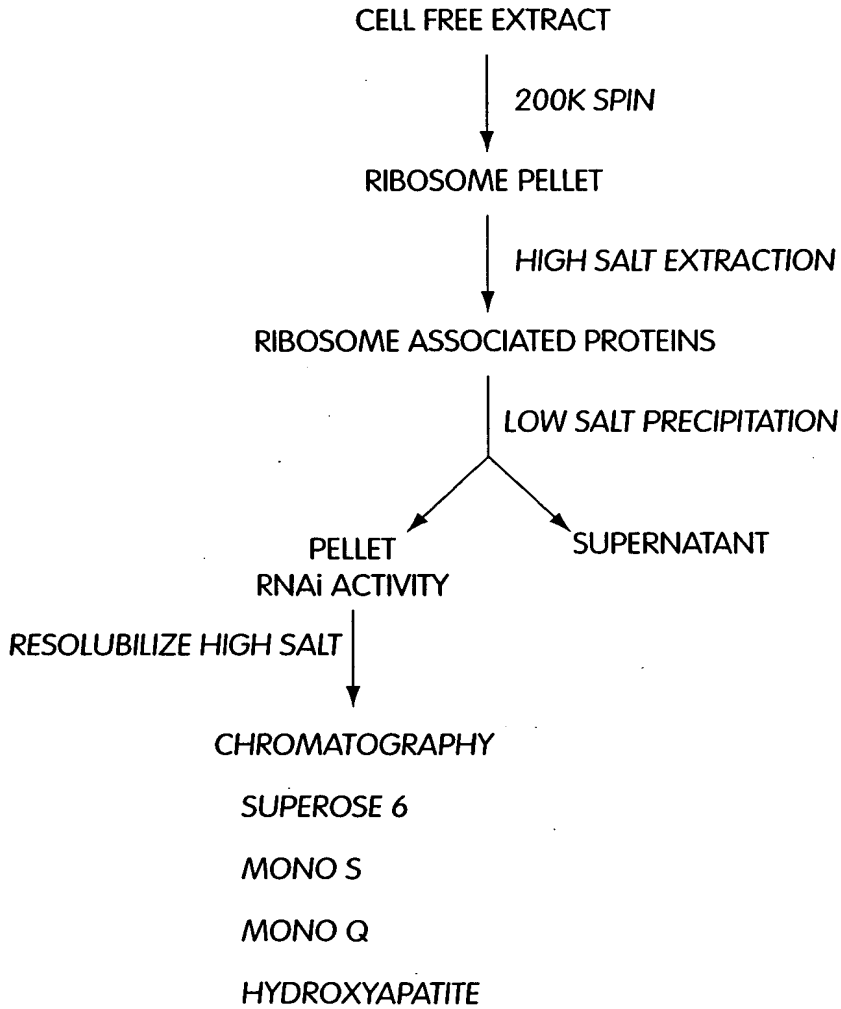


Fig. 9



10/31

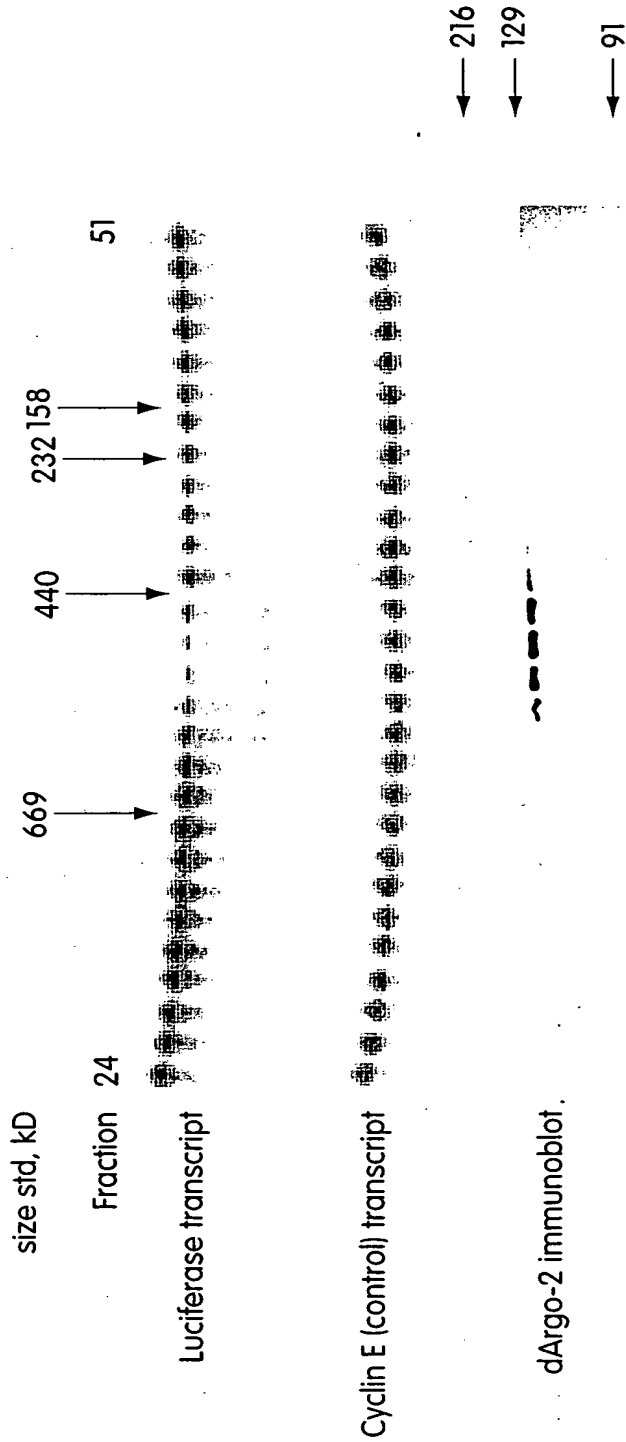


Fig. 10



11/31

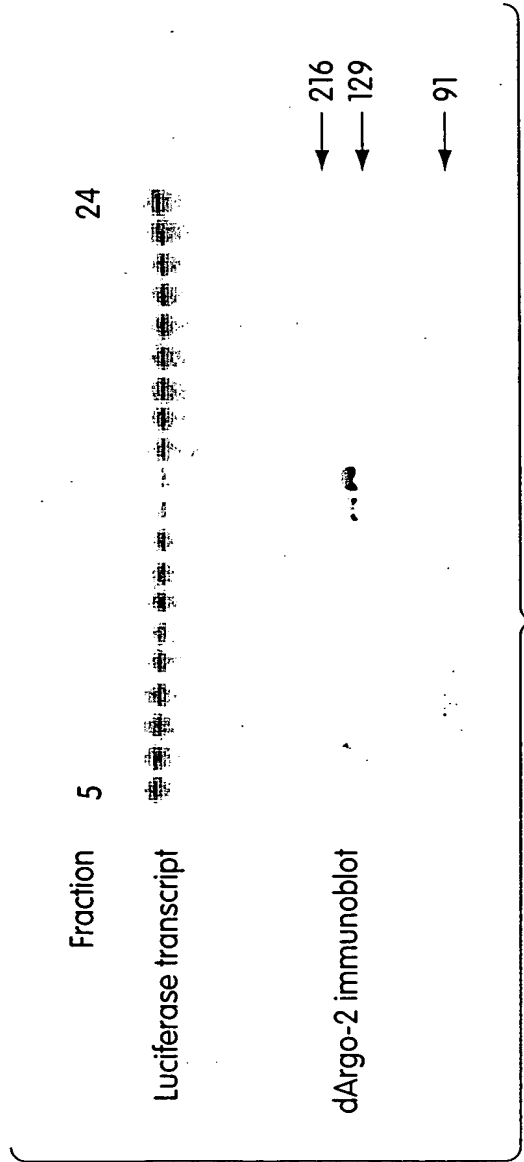


Fig. 11